



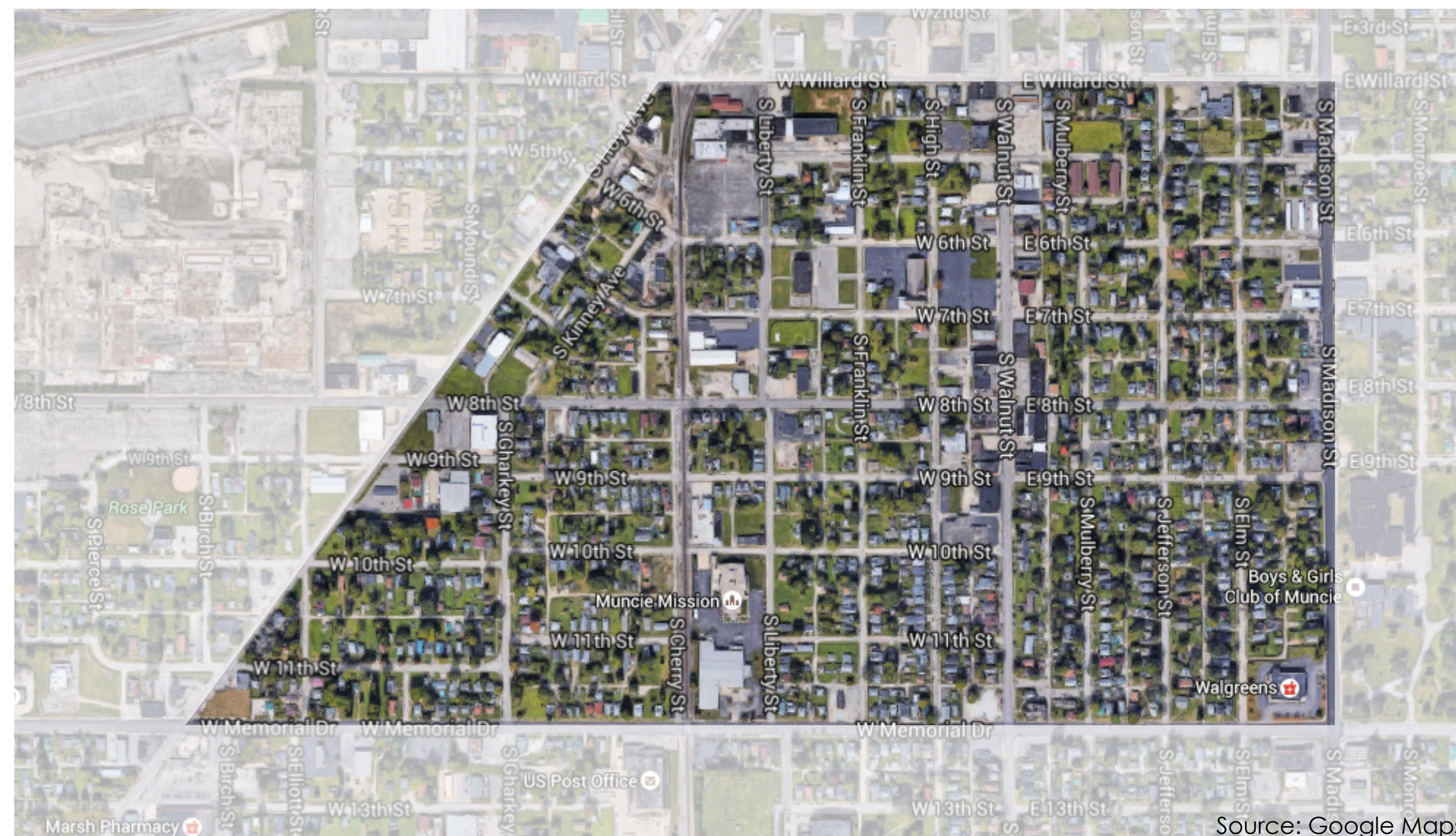
South Central

Quality of Place

South Central is focusing on improving its identity as part of its neighborhood action plan implementation. Knowing when you're in the South Central Neighborhood is important. The action plan stresses new and modern developments to improve the overall quality of life, and to make sure residents and their ideas are not just seen and heard, but ultimately realized. The "Identity" initiative in the SCNAP stresses redeveloping the neighborhood to show off some of its best existing characteristics, and the possibility for new developments in the future.



Artist: Kyle Herrera



Source: Google Maps

A Safe Environment

Improvements to the South Central Neighborhood may eventually ensure a sense of safety and security in south Central. Better street lighting, housing and infrastructure conditions, and access to everyday amenities can help change the neighborhood for the better. Safety education, a proposed neighborhood crime-watch program, and the provision of a local food market are all examples included in the SCNAP.



Artist: Kyle Herrera

About South Central

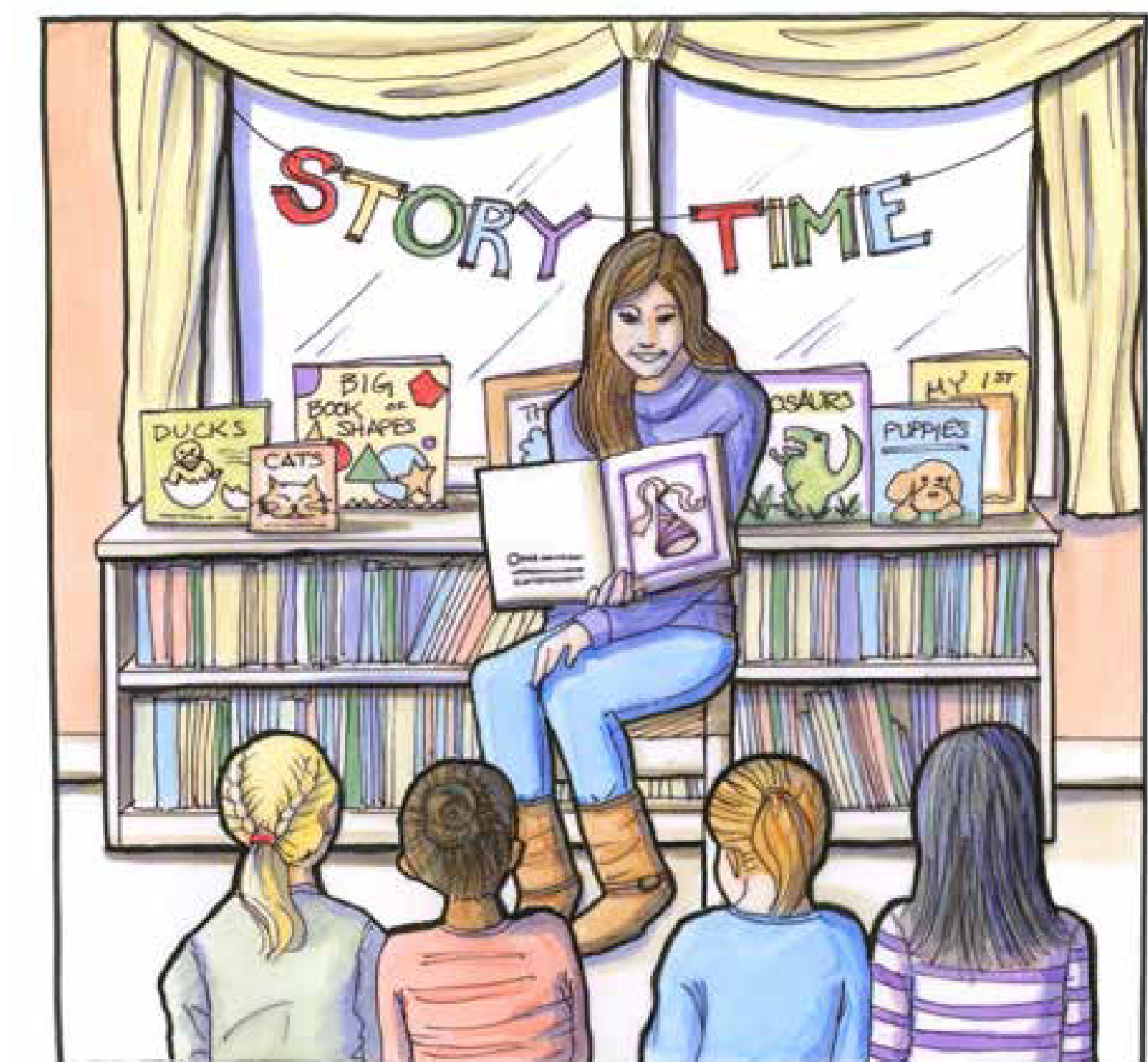
The South Central Neighborhood began as a place for community members who worked manufacturing or industrial jobs to live. The 220-acre up-and-coming neighborhood lies just south of Muncie's downtown and just to the west of Heekin Park and Inspire Academy.

The South Central Neighborhood Action Plan (SCNAP) details the area's history, conditions, and goals for future development. The initiatives outlined in the action plan include focuses on Education and Training, Health and Safety, Housing and Land, Identity, Local Economy, Public Infrastructure, and Social Support.

The People

The "Education and Training" initiative in the SCNAP focuses on empowering community members to learn new ideas and information. These kinds of new concepts and skills can then be used to reach personal, professional, and academic goals, and to further achieve success as a neighborhood by improving youth education opportunities and property management and maintenance skills.

South Central is full of people ready to take charge and work for their community.



Artist: Mandy Dyer